



INTERNATIONAL
COLLEGE *of* AUCKLAND



2026

NEW ZEALAND

"Leading Together for a Brighter Future"
emphasizes the power of unified vision in
shaping a better tomorrow

**CREATING
FUTURE
TOGETHER**

INTERNATIONAL
Prospectus

WWW.ICA.AC.NZ



**INTERNATIONAL
COLLEGE *of* AUCKLAND**



INVITING THE WORLD

TABLE OF CONTENTS

Table of Contents	01
Welcome to ICA	02
New Zealand's Educational Landscape	03
Are You Ready to Join Us	04
Support Services for Student Success	05
Our Courses	06
NZ Diploma Engineering (Electronics Engineering Strand) Level 6	07
NZ Diploma Engineering (Electrical Engineering Strand) Level 6	08
NZ Diploma in Information Technology (Level 5)	09
Study Pathway - Auckland Institute of Studies (AIS)	10
Study Pathway - Griffith University	11
NZ Certificate In English Language	12
NZ Certificate In English Language	13
Enrolment	14
	15



WELCOME TO INTERNATIONAL COLLEGE OF AUCKLAND NEW ZEALAND (ICA NZ)

Discover your future at ICA NZ, nestled in the heart of vibrant Central Auckland on Queen Street. Just steps away from the bustling Downtown area, the scenic Viaduct, the iconic Sky Tower, and the beautiful Auckland Harbour, ICA offers an unmatched environment for both learning and exploration. The city's energetic atmosphere and regular local events make it an exciting and inspiring place to be.

At ICA, we take pride in delivering top-tier education through a diverse range of programmes in Engineering, Information Technology, and Academic English. Our unwavering commitment to excellence is reflected in our registration under the Education Act of 1989 and our full compliance with the New Zealand Ministry of Education's Code of Practice for the Pastoral Care of International Students.

Join us at ICA—where quality education meets the vibrancy of city life. Your journey to success begins here.



WHY CHOOSE ICA NEW ZEALAND

ICA offers a compelling range of strengths that set it apart as a leading educational provider

- **Experienced Faculty**
passionate educators who mentor and guide
- **Modern Facilities**
purpose-built spaces for innovative learning
- **Industry Connections**
strong ties to local businesses and organisations
- **Real-World Focus**
practical skills for today's competitive job market
- **Global Community**
a multicultural campus fostering international friendships

SUPPORT, DEVELOPMENT AND ACHIEVEMENT

At ICA, students come from all over the world—bringing together different cultures, ideas, and experiences. This creates a vibrant, welcoming community that feels like a big international family.

We're all about helping you grow—both personally and academically. Our classes are just the right size: big enough for group learning, but small enough that you'll never feel lost in the crowd. You'll get the support you need, and you'll always feel like a valued part of the ICA journey.

OUR VISION

To be a leading provider of quality education by consistently meeting the needs of our stakeholders through excellence in educational delivery.

OUR MISSION

To deliver high-quality education that empowers students to realise their full potential and become internationally competitive in the global marketplace.

ESTABLISHED (2001)

Since its establishment in 2001, the International College of Auckland (ICA NZ) has proudly served as an NZQA-accredited institution committed to delivering excellence in education.

EXPLORING NEW ZEALAND'S EDUCATIONAL LANDSCAPE



New Zealand's educational landscape is thriving, offering world-class learning opportunities in a diverse and welcoming environment. At the heart of this progress is the ICA, a dynamic institution committed to academic excellence and student success.

ICA stands as a proud example of how quality education, industry-relevant programmes, and a supportive learning atmosphere can empower students to achieve their goals. Whether you're seeking to upskill, change careers, or begin your academic journey, ICA provides the foundation you need to succeed — both in New Zealand and globally.

With experienced faculty, modern facilities, and strong connections to local industries, ICA ensures that students are not only well-prepared academically but also equipped with the practical skills needed in today's competitive job market.

ICA'S COMMITMENT TO SUSTAINABILITY

Integrating Sustainability into Every Step of Learning

At ICA, our commitment to education goes hand in hand with our dedication to sustainability. As part of New Zealand's forward-thinking educational landscape, we strive to nurture not only academic excellence but also environmental responsibility.

ICA integrates sustainable practices across campus operations, raises awareness about environmental issues, and encourages students to become responsible global citizens. Through green initiatives, resource-efficient policies, and partnerships with eco-conscious organisations, we are building a learning environment that positively impacts the planet—inspiring students to lead with both knowledge and conscience.

Following services are available in Auckland City.

- Low Crime Rates and Policing
- Emergency Services
- Health and Safety Regulations
- Safe Transportation
- Community Programs and Support
- Disaster Preparedness

SAFETY IN AUCKLAND CITY, NEW ZEALAND

Auckland, New Zealand's largest and most vibrant city, is renowned for its high quality of life, beautiful landscapes, and welcoming culture. Safety is a key feature of Auckland's appeal, giving residents and visitors peace of mind while exploring everything the city has to offer.

COMFORTABLE LIVING TO SUIT EVERY LIFESTYLE

Whether you prefer a family atmosphere, student environment, or independent lifestyle, ICA supports a variety of accommodation choices

LIVE WITH A LOCAL FAMILY

Staying with a New Zealand host family is a fantastic way to immerse yourself in local culture, practise your English daily, and build lasting connections.

STUDENT RESIDENCE

Student hostel accommodation can be arranged upon request. ICA's primary student residence is Rocklands, located in Epsom—approximately 20 minutes from the ICA campus by bus.

INDEPENDENT LIVING

For students seeking more freedom, renting an apartment or sharing a flat is a popular option. Numerous websites and social media groups can help you find rental properties and flatmate opportunities in Auckland.

ARE YOU READY TO JOIN US ?

At ICA, we welcome the opportunity to build meaningful collaborations that make a lasting impact on education.

We believe strong partnerships are essential for driving innovation, enhancing student outcomes, and broadening access to quality education. Whether you represent an educational institution, industry organisation, community group, or government agency—we're eager to work with you.

Let's explore opportunities in

- Joint programmes and research initiatives
- Student mobility and exchange
- Training and professional development
- Knowledge-sharing to solve real-world challenges

Together, we can create a future where education empowers individuals and communities—in **New Zealand and beyond**. Let's connect, share ideas, and make it happen.



INTERNATIONAL STUDENTS

A World of Opportunities Awaits You at ICA

- Step 1 – Complete the Enrolment Application Form and submit all required documents.
- Step 2 – If you meet all entry requirements, you'll receive an Offer of Place and a Proforma Invoice.
- Step 3 – Pay the Proforma Invoice. A Receipt and Confirmation of Enrolment will be sent to you.
- Step 4 – Use these documents to apply for your Student Visa.
- Step 5 – Submit your application at the nearest New Zealand Embassy or High Commission.
- Step 6 – Once your visa is issued, notify ICA staff immediately and send a copy of your visa. Your course start date will be confirmed (minimum two weeks from contact).
- Step 7 – Upon arrival in Auckland, contact our Student Services/Marketing Office for orientation and course enrolment.
- Step 8 – Ask our Student Services Officers for any support you may need.
- Step 9 – Book your homestay accommodation and airport pickup at least two weeks before your arrival.
- Step 10 – If you're under 18, a parent or guardian must complete the Under 18 Consent Form. ICA will process your application accordingly.
- Step 11 – For first-time international students, an international assistance fee is included in your tuition.

HOW DO I APPLY?

Download your application forms at www.ica.ac.nz
Submit via email: enrol@ica.ac.nz or send it to the appropriate Student Services Officer by mail/fax.

SCHOLARSHIPS AVAILABLE

ICA offers a range of scholarships to support deserving students. Check our website or contact us to see if you're eligible.

CAREER-FOCUSED LEARNING

Our programmes are designed with industry in mind, helping you build the skills employers are looking for locally and globally.

CLEAR STUDY PATHWAYS

Whether you aim to continue to higher education or enter the workforce, ICA provides flexible pathways to help you achieve your goals.

COMPREHENSIVE SUPPORT SERVICES FOR STUDENT SUCCESS



CODE OF PRACTICE

For the Pastoral Care of International Students

The International College of Auckland (ICA) is fully committed to the well-being of international students and complies with the Code of Practice for the Pastoral Care of International Students published by the New Zealand Qualifications Authority (NZQA). Copies of the Code are available upon request at ICA or can be accessed online:

<http://www.nzqa.govt.nz/providers-partners/caring-for-international-students>

Immigration

All international students must obtain a valid visa to enter and study in New Zealand. It is the student's responsibility to maintain a valid student visa throughout their studies at ICA.

Transit Visas: Ensure you hold appropriate transit visas for any stopovers en route to New Zealand. Without these, you may be denied boarding or entry.

For full details on visa requirements, student employment rights, and compliance information, visit:
<http://www.immigration.govt.nz>

Accident Insurance

New Zealand's Accident Compensation Corporation (ACC) provides accident insurance for all citizens, residents, and temporary visitors. However, this does not cover all medical-related costs. More information: <http://www.acc.co.nz>.

Medical Travel Insurance

All international students are required to have comprehensive medical and travel insurance throughout their stay in New Zealand, starting from the time they leave their home country until they return.

REFUND POLICY

ICA has a clear refund policy in place to address various withdrawal scenarios

- 01 Visa declined after payment:
Full refund minus NZD 500.
- 02 Visa granted, but withdrawal before course starts:
Refund minus 25% of fees paid.
- 03 Two-year enrolment, withdrawal before second year begins:
Refund minus 25% of second-year fees.
- 04 Withdrawal within first 10 working days:
Refund minus up to 25% of fees paid (to cover college costs).
- 05 Withdrawal on or after the 5th working day:
No refund available.
- 06 No refund if:
 - Student is expelled or dismissed
 - Student transfers to another institution
 - Enrolment was inaccurate or falsified
- 07 Withdrawals require written confirmation from:
 - The student, or
 - Parent/guardian (if under 18)
- 08 Any timeframes (e.g., 10 working days) include the first day of the course.
- 09 Under-18 withdrawals must be confirmed in writing by parent/guardian.
- 10 Students with education loans:
ICA may require consent from the lender to process the withdrawal.
- 11 Refunds (in loan cases) may be directed to the lender bank unless instructed otherwise.
- 12 For homestay refunds:
 - Students must give two weeks' notice, or
 - Forfeit two weeks' homestay fees
Remaining fees will be refunded accordingly.
- 13 Refund applications:
May require further discussion or documentation. A written decision will be provided within four weeks.

OUR COURSES



ENGINEERING

New Zealand Diploma Engineering (Electronics Engineering Strand) Level 6

Level 6 - 240 Credits

New Zealand Diploma Engineering (Electrical Engineering Strand) Level 6

Level 6 - 240 Credits

INFORMATION TECHNOLOGY

New Zealand Diploma in Information Technology (Level 5)

Level 5 - 120 Credits

ENGLISH

New Zealand Certificate in
English Language

Level 1 - Foundation

New Zealand Certificate in
English Language

Level 1

New Zealand Certificate in
English Language

Level 2

New Zealand Certificate in
English Language

Level 3 - General

New Zealand Certificate in
English Language

Level 3 - Applied

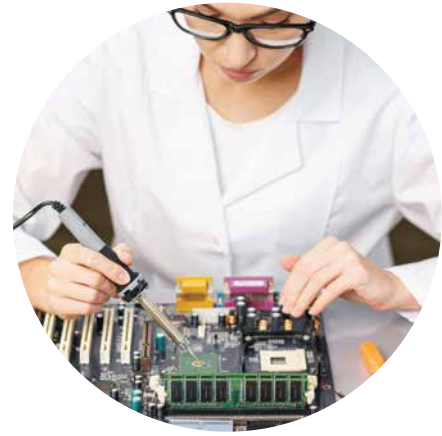
New Zealand Certificate in
English Language

Level 4 - Academic

New Zealand Certificate in
English Language

Level 5 - Academic

NZ DIPLOMA IN ENGINEERING (Electronics Engineering Strand)



Level
6

Credits
240

Duration
2 Years

Overview

The New Zealand Diploma in Engineering (Electronics) (Level 6) is a nationally recognized qualification designed for individuals passionate about electronics, technology, and innovative solutions. This two-year program provides a comprehensive foundation in electronic engineering principles, combining theoretical knowledge with practical skills to prepare students for dynamic roles in the industry.

Graduates of the programme will be capable of operating at a technician level scope of practice as outlined by the Dublin Accord (International Engineering Alliance, 2002)

Entry Requirements

Domestic Students

- NCEA Level 2*
- with a minimum total of 48 credits at Level 2 in four subjects including at least 12 credits in mathematics (preferably achievement standards is algebra, calculus, or trigonometry);
- including a minimum of 10 literacy credits at Level 1 or higher (for those who achieved NCEA level 2 before 2013) Equivalent qualifications (i.e., International Baccalaureate or Cambridge); or
- Equivalent credits from appropriate trades training and/or demonstrated skills and experience; and
- An IELTS (Academic) overall band score of 6.0 with no individual band score of less than 5.5 or equivalent

International Students

- Equivalent secondary school qualifications (e.g., Year 12 completion with Maths and Physics)
- Minimum English language proficiency: IELTS (Academic) 6.0 overall (no band less than 5.5) Or equivalent accepted qualification
- Valid student visa and insurance (as per NZQA requirements)

Further Study Pathway
Students can apply for
Bachelors of Engineering Technology

Intakes

February 2026 / July 2026

Career Opportunities

Career Opportunities for NZDE
(Electronic Engineering) Graduates

- Power systems engineer
- Electrical engineer
- Electrical services engineer
- Electronics engineer
- Computer engineer
- Control systems engineer
- Telecommunications engineer
- Robotics/automation engineer

Common Compulsory

DE4101 Engineering Fundamentals

DE4102 Engineering Mathematics 1

DE4103 Technical Literacy

DE4401 Electrical Principles

DE5405 Computer Programming 1

DE5408 Introduction to Networks OR
DE5423 – CAD - Computer Aided Drawing

DE4402 Electrical and Electronic Applications

DE5403 Electronic Principles

DE5414 Electronic Manufacturing 1

DE6412 Computer Programming 2

DE6101 Engineering Management

DE6102 Engineering Project (Electronics)

Electronics Electives (Level 6)

DE5407 – Electronics 1

DE5406 – Microcontrollers 1

DE6402 – Electronics 2

DE6417 – Microcontrollers 2

2 Years

Full-time: 2 years

NZ DIPLOMA IN ENGINEERING (Electrical Engineering Strand)



Level
6

Credits
240

Duration
2 Years

Overview

Are you ready to power up your future in engineering? The New Zealand Diploma in Engineering (Electrical) offered at ICA is designed to equip students with the essential theoretical knowledge and hands-on practical skills required to excel in the dynamic field of electrical engineering, especially in power systems. This nationally developed and internationally recognised qualification focuses on real-world industry needs and is aligned with Engineering New Zealand standards.

Students will gain solid grounding in electrical principles, machinery, and sustainable energy, and will also complete an industry-focused capstone project. Real-world labs, small class sizes, and experienced tutors make this programme ideal for future electrical technicians and engineers.

Entry Requirements

Domestic Students

- NCEA Level 2*
 - with a minimum total of 48 credits at Level 2 in four subjects including at least 12 credits in mathematics (preferably achievement standards is algebra, calculus, or trigonometry);
 - including a minimum of 10 literacy credits at Level 1 or higher (for those who achieved NCEA level 2 before 2013) Equivalent qualifications (i.e., International Baccalaureate or Cambridge); or
- Equivalent credits from appropriate trades training and/or demonstrated skills and experience; and
- An IELTS (Academic) overall band score of 6.0 with no individual band score of less than 5.5 or equivalent

International Students

- Equivalent secondary school qualifications (e.g., Year 12 completion with Maths and Physics)
- Minimum English language proficiency: IELTS (Academic) 6.0 overall (no band less than 5.5) Or equivalent accepted qualification
- Valid student visa and insurance (as per NZQA requirements)

Further Study Pathway
Students can apply for
Bachelors of Engineering Technology

Intakes

February 2026 / July 2026

Career Opportunities

Career Opportunities for NZDE
(Electronic Engineering) Graduates

- Power Systems Engineer
- Electrical Engineer
- Electrical Services Engineer
- Electronics Engineer
- Control Systems Engineer
- Automation and Robotics Engineer
- Computer or Network Engineer
- Electrical Design Technician

Common Compulsory

1. DE4101 – Engineering Fundamentals
2. DE4102 – Engineering Mathematics 1
3. DE4103 – Technical Literacy
4. DE4401 – Electrical Principles
5. DE4402 – Electrical and Electronic Applications
6. DE5401 – Power Engineering
7. DE5402 – PLC Programming 1
8. DE5403 – Electronic Principles
9. DE5404 – Electrical Machines
10. DE5408 – CAD Electrical
11. DE6101 – Engineering Management
12. DE6102 – Engineering Project

Electronics Electives (Level 6)

1. DE6401 – Power Systems 1
2. DE6409 – Electrical Building Services
3. DE6411 – PLC Programming 2
4. DE6420 – Protection Systems

2 Years

Full-time: 2 years

NZ DIPLOMA IN INFORMATION TECHNOLOGY

Technical Support



Level
5

Credits
120

Duration
1 Year

Overview

This program prepares graduates for careers in New Zealand's and the global IT industry by providing essential technical and professional skills. Graduates will be able to install and configure IT hardware and software, manage networks and databases, and support organisational IT systems.

They will develop skills in troubleshooting, IT security, service management, and gain knowledge of information systems and interaction design to enhance business processes and user experience. The program also introduces basic software development, allowing students to create simple applications.

Professional, legal, and ethical practices are emphasized, ensuring graduates can work responsibly in various IT environments. Overall, the program produces industry-ready professionals equipped to meet the demands of today's technology-driven workplaces.

Aim of the Course

The program aims to outcome graduates who are ready to be launched in the global and New Zealand's information technology industry. The graduates will have the following technical and core IT skills.

Select, install and configure IT hardware and systems software to meet organisational requirements. Apply a broad operational knowledge of networking, and associated services and technologies to meet typical organisational requirements.

Configure and administer systems and applications to meet typical organisational IT support requirements. Apply a broad operational knowledge of database administration to meet typical organisational data storage and retrieval requirements.

Troubleshoot and resolve a range of common system problems using appropriate tools and procedures. Identify common issues related to IT security and apply a range of solutions.

Demonstrate an operational knowledge and understanding of IT service management to meet typical organisational customer service requirements.

Apply the fundamentals of information systems concepts and practice to support and enhance organisational processes and systems. Apply the fundamentals of interaction design concepts and practice to enhance interface design. Apply the principles of software development to create simple working applications.

Apply professional, legal, and ethical principles and practices in a socially responsible manner as an emerging IT professional.

Intakes

February, May, July, October, December, January

Term 1

Computer Hardware and Operating Systems
Data Communication and Computer Networks

Term 2

Systems Administration
Database Design and Administration

Term 3

Web Design Fundamentals
Programming Principles

Term 4

IT Security and Professional Practice
IT Project

Career Opportunities

- Hardware/Electronics Design Engineer
- Electronics Technicians
- Technical Assistant
- Fire Alarm Technician.
- Embedded and Application Engineer.

Educational Pathway



- Bachelor of Information Technology with Auckland Institute of Studies (AIS).
- Bachelors in IT from Griffith University Australia (www.griffith.edu.au)
- Industry specific training and certification

Entry Requirements

An IELTS overall band score of 5.5 with no individual band score of less than 5.0; or equivalent
OR 8 credits at NCEA Level 2, including 12 credits in English or Maori; OR
The New Zealand Certificate in Information Technology Essentials (Level 4); OR
A relevant qualification at NZQF Level 3 or above;
OR Equivalent.

STUDY PATHWAY

Degree Programmes

NZ DIPLOMA IN INFORMATION TECHNOLOGY

Level 5 · 120 Credits · 12 Months

The International College of Auckland (ICA) and the Auckland Institute of Studies (AIS) have signed an articulation agreement to facilitate the transfer of credits from the ICA's New Zealand Diploma in Information Technology - Technical Support (Level 5) programme to AIS Bachelor of Information Technology programme.

BACHELOR OF INFORMATION TECHNOLOGY

Level 7 · 360 Credits · 24 Months

The Bachelor of Information Technology (BIT) prepares students to become IT professionals with a breadth of knowledge across a range of IT subdisciplines, and a depth of knowledge in one of three specialisations. The Networks and Security specialisation equips students with skills in computer network engineering, server systems and network security. The Information Systems specialisation prepares students for the data-driven industry by equipping them with the analytical skills to develop and support organisations' IT and enterprise systems. These skills are applicable to the development and management of the software, hardware, and data that is vital to the operation of modern businesses. The Software Development specialisation equips students with the skills to analyse, design, develop, test and deploy business software solutions. Software development is taught using the Python, Java and C# languages, in the .NET and Android environments. IT students at AIS will gain skills allowing them to lead and become strong participants in IT team projects. The programme comprises 23 courses, including:

Twelve Compulsory Courses

COMP510 Fundamentals of Information Systems and Technology
COMP511 Information Technology Professional Skills
COMP513 Fundamentals of Computer Programming
COMP514 Fundamentals of Computer Databases
COMP515 Fundamentals of Computer Networking
MATH501 Essentials of Mathematics and Statistics
COMP602 Computer System Testing
COMP609 Information Systems Security
COMP617 Requirements Modelling
COMP621 Operating Systems
COMP701 Information Technology Project Management
COMP720 Information Technology Project (completed over two trimesters) OR
COMP721 Intensive Information Technology Project (completed over one trimester)

English Requirements.

IELTS (Academic) overall band score of 6.0 with no individual band score of less than 5.5; or equivalent.

Approved Programmes

New Zealand Diploma in Information Technology - Technical Support (Level 5)

Entry to AIS programme

Bachelor of Information Technology programme - Year 2

English Language Entry Requirements

Overall band score of 5.5 with no individual band score less than 5.0; or equivalent

Course Content

1. Computer Hardware and Operating Systems
2. Data Communication and Computer Networks
3. Systems Administration
4. Database Design and Administration
5. Web Design Fundamentals
6. Programming Principles
7. IT Security and Professional Practice
8. IT Project



Choose a Specialisation

Networks and Security

CONE618 Server Administration
CONE622 Intermediate Computer Networking
CONE623 Cloud Computing
CONE709 Network System Security
CONE710 Advanced Computer Networking
CONE711 Wireless Network Design

Information Systems

COMP601 Systems Analysis and Design
INFO620 Enterprise Resource Planning Systems
SOFT605 Object Oriented Programming
INFO712 Management Information Systems
INFO714 E-Business Strategies and M-Commerce
INFO716 Business Intelligence and Analytics

Software Development

COMP601 Systems Analysis and Design
SOFT605 Object Oriented Programming
SOFT606 Desktop Applications Development
SOFT703 Web Applications Development
SOFT704 Human-Computer Interaction
SOFT708 Mobile Applications Development

Choose 75 Credits of Elective Courses

5 elective courses, or 4 with COMP723 Information Technology Internship may be selected from Information Technology or Business programmes including those listed under the other I.T. specialisations. For a full list of available courses visit: www.ais.ac.nz/courses

Students have the opportunity to gain Real World Experience by taking COMP722 Information Technology Industry Practice or COMP723 Information Technology Internship as one of their elective courses.

The inclusion of courses outside the Information Technology programme may be considered with the approval of the Head of School.

STUDY PATHWAY

Degree Programmes

NZDITTS
LEVEL 5



GRIFFITH UNIVERSITY BACHELOR OF INFORMATION TECHNOLOGY

Overview

With this degree, you will achieve a high level of core IT technical knowledge and a major specialisation, ensuring you are prepared for a career across a vast number of roles and industries. You will learn in purpose-built, industry-leading facilities crafted to reflect genuine workplaces. From our Big Data Visualisation Lab to our virtual reality, augmented reality, gamification, and robotics labs, you will have ample opportunity to enhance your learning through cutting-edge technology.

Graduate Outcomes

Depending on your major, you may find a job as a systems analyst, business analyst, software developer, database administrator, systems administrator, network and security administrator, network architect, technical writer, web developer, app developer, game developer, computer engineer, educator, or researcher. You'll be prepared for a career in commerce, industry, corporate IT, government, or private consulting.

Flexible Component

Depending on your major, you may find a job as a systems analyst, business analyst, software developer, database administrator, systems administrator, network and security administrator, network architect, technical writer, web developer, app developer, game developer, computer engineer, educator, or researcher. You'll be prepared for a career in commerce, industry, corporate IT, government, or private consulting.

Major Courses

- Information Systems and Business Analysis
- Networks and Cyber Security
- Software Development
- Data Analytics and IoT
- Information Technology

After successfully completing the NZ Diploma IT Technical Support (NZDITTS level 5) + NZ Diploma (NZDSA level 6) with two years of study at ICA, the student will get MOCP (Credit precedents) of credits transfer from ICA. The student can now continue to the Bachelor of Information Technology at Griffith University, Gold Coast and Nathan Campus (Australia).

Term 1

Computer Hardware and Operating Systems
Data Communication and Computer Networks

Term 2

Systems Administration
Database Design and Administration

Term 3

Web Design Fundamentals
Programming Principles

Term 4

IT Security and Professional Practice
IT Project

Career Opportunities

- System Analyst.
- Business Analyst.
- Software Developer.
- Database Administrator.
- Systems Administrator.
- Networks Security Administrator.
- Network Architect.
- Technical Writer.
- Web Developer, App Developer.
- Game Developer.
- Computer Engineer.
- Educator or Researcher.

Entry Requirements

To be 16 years old by the time the programme starts

To be a high school graduate

To have a New Zealand Certificate in English Language (Academic) (Level 4) or equivalent, IELTS (Academic) with an overall score of 6 with no band lower than 5.5

NZ CERTIFICATE IN ENGLISH LANGUAGE

New Zealand Certificate



Level 1 Foundation

60
Credits

24
Weeks

Overview

The New Zealand Certificate in English Language (NZCEL) Foundation programme covers basic speaking, reading, writing and listening skills. Upon completing this programme, students will be able to communicate with support in everyday situations, e.g., shopping at the supermarket or ordering food in a restaurant. The outcomes of the course is equivalent to CEFR (Common European Framework of Reference)

Entry Requirements

- Applicants must be 14 years of age or older
- Complete the ICA English Internal Entry Test, determining suitability for enrolment for the programme

Study Pathway

New Zealand Certificate in English Language (Level 1).

Level 1

60
Credits

24
Weeks

Overview

The New Zealand Certificate in English Language (Level 1) graduates will have the language skill and knowledge required to communicate in everyday situations of immediate personal relevance, in order to participate in daily life and/or further education. The course is equivalent to the Common European Framework of Reference (CEFR)

Entry Requirements

- Applicants must be 14 years of age or older
- Complete the ICA English Internal Entry Test, determining suitability for enrolment for the programme; or
- Upon successful completion of the NZCEL (Level 1) (Foundation) programme

Study Pathway

New Zealand Certificate in English Language (Level 2)

Level 2

60
Credits

16
Weeks

Overview

The New Zealand Certificate in English Language (Level 2) graduates will have the language skills and knowledge required to communicate in straightforward and familiar situations with emerging independence and fluency, in order to participate in daily life or in further education.

Entry Requirements

- Applicants must be 14 years of age or older
- Complete the ICA English Internal Entry Test, determining suitability for enrolment for the programme; or
- Upon successful completion of the NZCEL (Level 1) programme

Study Pathway

New Zealand Certificate in English Language (General) (Level 3)

Level 3 General

60
Credits

16
Weeks

Overview

The New Zealand Certificate in English Language (General) (Level 3) targets ESL (English as Second Language) learners who intend to participate in further mainstream education in New Zealand. The programme aims to provide the learners with the language skills and knowledge necessary to communicate in a range of reasonably familiar situations, and enable them to success in further academic programmes from the National Qualifications Framework (Level 4 or above).

Entry Requirements

- Applicants must be 14 years of age or older
- Complete the ICA English Internal Entry Test, determining suitability for enrolment for the programme; or
- Upon successful completion of the NZCEL (Level 2) programme; or
- An IELTS (Academic) overall band score of 4.5 with no individual band score less than 4.0; or equivalent

Study Pathway

The New Zealand Certificate in English Language (Level 3) (Applied)

NZ CERTIFICATE IN ENGLISH LANGUAGE

New Zealand Certificate



Level 3 Applied

60
Credits

18
Weeks

Overview

The New Zealand Certificate in English Language (Applied) (Level 3) targets ESL (English as Second Language) learners who intend to participate in further mainstream education in New Zealand. The programme aims to provide the learners with the language skills and knowledge necessary to communicate in a range of academic situations, in order to succeed in further academic programmes from the National Qualifications Framework (Level 4 or above).

Entry Requirements

- Applicants must be 14 years of age or older
- Complete the ICA English Internal Entry Test, determining suitability for enrolment for the programme; or
- Upon successful completion of the NZCEL (Level 3) (General) programme; or
- An IELTS (Academic) overall band score of 5.0 with no individual band score less than 4.5; or equivalent

Study Pathway

New Zealand Certificate in English Language (Level 4)

Level 4 Academic

60
Credits

18
Weeks

Overview

The New Zealand Certificate in English Language (Academic) (Level 4) targets ESL (English as Second Language) learners who intend to participate in further mainstream education in New Zealand. The programme aims to provide the learners with the language skills and knowledge necessary to communicate in a range of academic situations, in order to succeed in further academic programmes from the National Qualifications Framework (Level 5 or above).

Entry Requirements

- Applicants must be 14 years of age or older
- Complete the ICA English Internal Entry Test, determining suitability for enrolment for the programme; or
- Upon successful completion of the NZCEL (Level 3) (Applied) programme; or
- An IELTS (Academic) overall band score of 5.5 with no individual band score less than 5.0; or equivalent

Study Pathway

Certificate or Diploma at Level 6,
Diploma or Degree at Level 7,
Graduate Certificate or Diploma at Level 7,
New Zealand Certificate in English Language (Level 5)

Level 5 Academic

60
Credits

18
Weeks

Overview

The New Zealand Certificate in English Language (Level 5) graduates will have the language skills and knowledge required to communicate in straightforward and familiar situations with emerging independence and fluency, in order to participate in daily life or in further education.

Entry Requirements

- Applicants must be 14 years of age or older
- Complete the ICA English Internal Entry Test, determining suitability for enrolment for the programme; or
- Upon successful completion of the NZCEL (Level 4) programme
- An IELTS (Academic) overall band score of 6.0 with no individual band score less than 5.5; or equivalent

Study Pathway

Upon completion of this programme, students can do a Post Graduate Diploma, Post Graduate Certificate (Level 8), Bachelor Honours Degree (Level 8), Masters (Level 9), PhD (Level 10)

FLUENCY STARTS HERE!

Unlock Your Potential

Unlock new opportunities with our expert-led English courses! Whether you're a beginner or looking to refine your skills, our tailored programs help you improve speaking, writing, listening, and reading. Learn in a supportive and interactive environment designed to boost your confidence and fluency. Join us today and take the first step toward mastering English!



INTERNATIONAL
COLLEGE of AUCKLAND

www.ica.ac.nz

ENROLMENT

Studying at ICA in New Zealand



Embarking on your educational journey at the International College of Auckland (ICA) is an exciting experience that requires careful preparation. You can apply directly to ICA or through an approved ICA representative. We recommend submitting your application at least three months before your course begins to ensure a smooth process.

To apply, you may need the following documents

- A valid English language proficiency test result, such as Academic IELTS, PTE, TOEFL, NZCEL, or an equivalent recognized qualification. Please note that these results are valid for only two years from the test date.
- Copies of your academic records, along with certified translations if they are not in English (including transcripts and award certificates).
- Proof of relevant work experience (such as reference letters).

Applying online

Fast. Simple. Secure.

Visit the Online Application section at www.ica.ac.nz and complete the International Student Application Form.

- Select your preferred programme and major
- Fill out all sections accurately
- Upload all required documents

Need help? Contact our team at: enrol@ica.ac.nz – We're happy to assist!

Prefer to Apply by Mail?

You can also post your application to:

ICA House

Level 3, 520 Queen Street
Auckland 1010, New Zealand

PRE-DEPARTURE CHECKLIST

Get Ready for a Smooth Landing in New Zealand

- Organise your visa – Visit www.immigration.govt.nz to find your nearest New Zealand Embassy or INZ office.
- Check your passport – Ensure it's valid for the entire study period.
- Book your accommodation – Arrange through ICA, your agent, or a trusted contact.
- Prepare key documents – Bring copies of your Offer of Place, transcripts, passport, and ID.
- Bring at least NZD 300 in cash – To cover initial expenses upon arrival.
- Schedule health check-ups – Medical, dental, and optical. Carry any required medication with prescriptions.
- Know your country's embassy contact in New Zealand.
- Save ICA's emergency contact number: +64-9-309-9558

VISIT OUR WEBSITE

Looking for course details, tuition information, accommodation options, or support services?

Explore it all at: www.ica.ac.nz

WWW.ICA.AC.NZ

Your future starts here. Let ICA help you take the next step!



2026

NEW ZEALAND

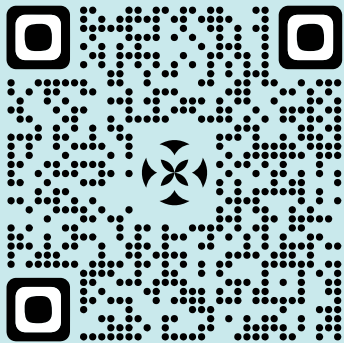
"Leading Together for a Brighter Future"
emphasizes the power of unified vision in
shaping a better tomorrow

DISCOVER. LEARN. ACHIEVE.

INTERNATIONAL COLLEGE OF AUCKLAND



INTERNATIONAL
COLLEGE *of* AUCKLAND



ICA House, Level 3,
520 Queen Street,
Auckland,
New Zealand-1010
T : +64-9-3099558
E : marketing@ica.ac.nz
W : www.ica.ac.nz